



FINDINGS OF 13TH TEITI REPORT FOR THE FISCAL YEAR 2020/2021

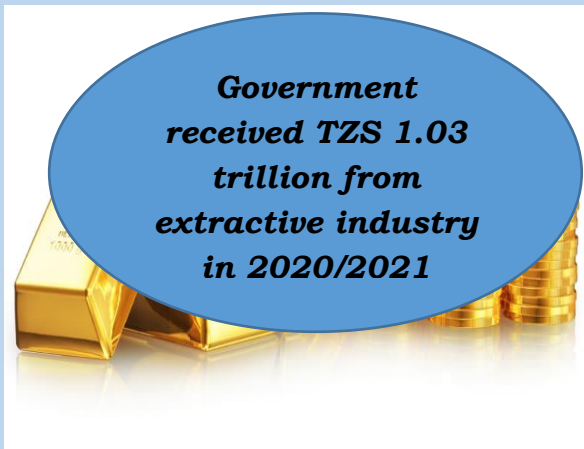
Number of companies reported = 45

Mining Companies - 26

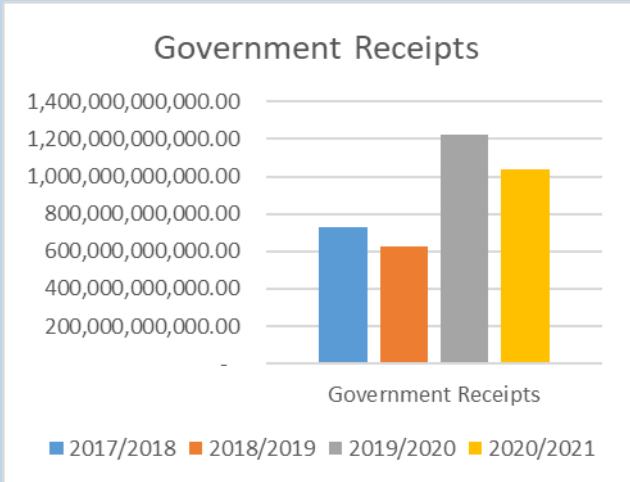
Oil and Gas Companies - 7

Supporting Companies - 12

Total receipts by the Government from the Extractive industries in 2020/21



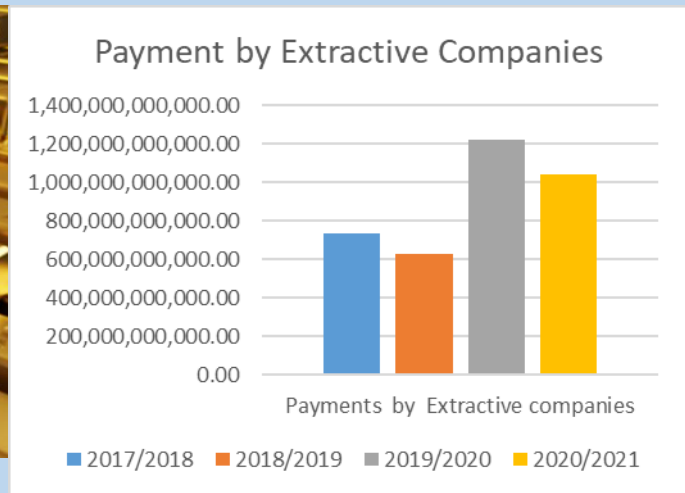
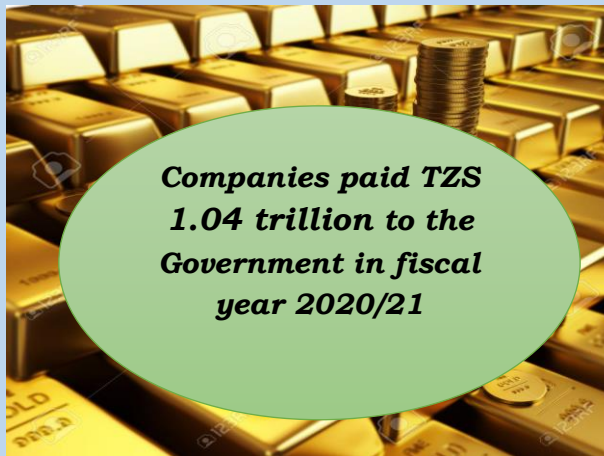
Revenue trend from 2017/18 to 2020/21



EXTRACTIVE COMPANIES' PAYMENT TO THE GOVERNMENT IN FISCAL YEAR 2020/21

Total payment by Extractive companies in the fiscal year 2020/21

Government revenue from extractive industry from 2016/17 to 2020/21



What is TEITI?

Tanzania Extractive Industry Transparency Initiative (TEITI) is the Tanzania Chapter of the global Extractive Industry Transparency Initiative (EITI) that set standards of transparency and accountability in Extractive Industry (EI). Extractive Industry (EI) companies are those companies engaging in the extraction of minerals, oil, and gas.

Why TEITI?

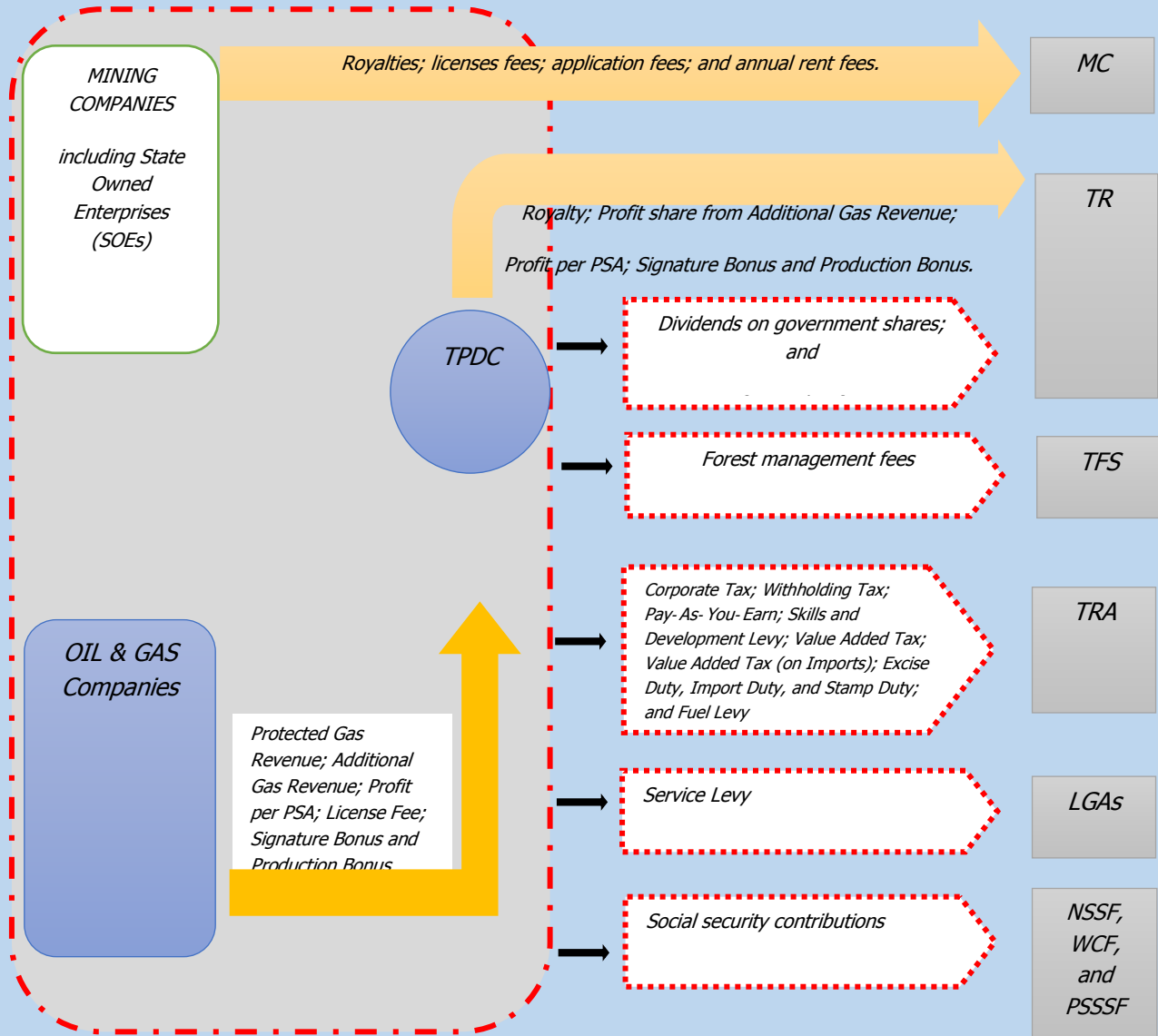
TEITI strives to enhance transparency and accountability of payments made by extractive companies and revenues received by the government from the oil, gas, and mining sectors. Furthermore, TEITI aspires to enhance public awareness by publishing the payments and the revenues accrued from Extractive Industries.

Overview

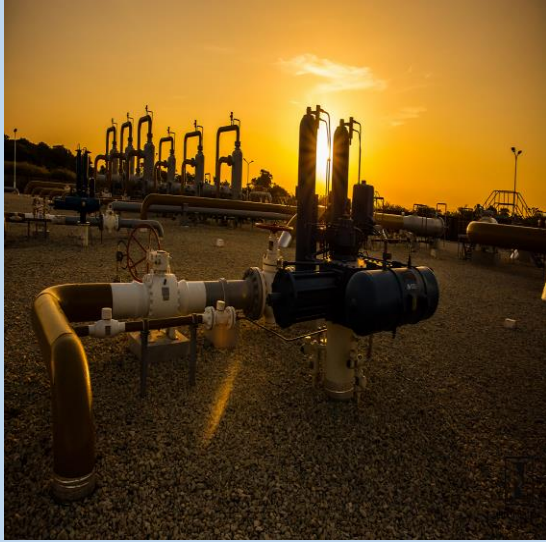
The 13th TEITI report which covers fiscal year 2020/2021 provides an overview of the extractive sector in Tanzania along with the latest policy and regulatory developments and reconciliation of company payments and government receipts from July 1, 2020, to June 30, 2021.

The reporting entities participated in this reconciliation included extractive companies (dealing with mining, oil, and gas), Service Providing companies and government agencies. TEITI Committee approved a materiality threshold of TZS 1 billion of total government receipts reported by the three Government Agencies in the fiscal year 2020/21. As a result, *a total of fifty five (55) companies and three (3) State-Owned Companies to participate in the reconciliation scope*. The contribution of these Fifty five (55) reporting entities amounted to 90.61% of the total government revenue collected from the extractive companies in 2020/21. Hence, all Fifty five (55) companies were required to fill and submit reporting templates. Only 45 companies submitted filled templates within the given time.

FLOW OF PAYMENT MADE BY EXTRACTIVE COMPANIES TO THE GOVERNMENT AGENCIES



GOVERNMENT RECEIPTS BY SECTOR FOR THE FISCAL YEAR 2020/2021



Oil and Gas sub-sector generated TZS 183.3 billion equivalent to 17.70% of the total Government receipts from Extractive Industries

+



Mining sub-sector generated TZS 731.1 billion equivalent to 70.58% of the total Government receipts from Extractive Industries

Supporting Companies generated TZS 121.5 billion equivalent to 11.73 of the total Government receipts from extractive sector

CONTRIBUTION OF THE FIRST 18 COMPANIES TO THE GOVERNMENT RECEIPT IN THE FISCAL YEAR 2020/21

GEITA GOLD MINING LIMITED	466.0 billion
SAMAX RESOURCES LTD.	110.3 billion
NORTH MARA GOLD MINE LIMITED	98.4 billion
M&P EXPLORATION PRODUCTION TANZANIA LIMITED	89.2 billion
PAN AFRICAN ENERGY TANZANIA LIMITED	73.1 billion
SHATA MINING COMPANY LIMITED	62.3 billion
BULYANHULU GOLD MINE LIMITED	41.2 billion
PANGEA MINERALS LTD	28.8 billion
TANZANIA PETROLEUM DEVELOPMENT CORPORATION	17.3 billion
RUVUMA COAL LIMITED	6 billion
TANCOAL ENERGY LIMITED	3.6 billion
STAMIGOLD COMPANY LIMITED	3.5 billion
SANDVIK MINING AND CONSTRUCTION	3.3 billion
DANGOTE CEMENT LTD	2.8 billion
CATA MINING COMPANY LTD	2.5 billion
MANTRA TANZANIA LTD	2.3 billion
AUMS (T) LTD	2.0 billion
TANGA CEMENT LTD	1.6 billion

CONTRIBUTION OF REVENUE STREAMS TO THE GOVERNMENT RECEIPTS 2020/21

SN	Description of the payment	Amount	%
	Payments to the Mining Commission (MC)	374,992,119,296.86	36.20
1	Annual Rent	10,537,331,297.46	1.02
2	Clearance & Inspection fees	52,810,507,151.39	5.10
3	Fines, Penalties and Forfeitures	605,241,818.76	0.06
4	Geological Fees	604,827,756.40	0.06
5	Mining Royalties	310,434,211,272.85	29.97
	Payments made to Tanzania Petroleum Development Corporation (TPDC)	111,327,545,027.67	10.75
6	Royalty	-	-
7	Acreage/Licence fees	1,138,951,290.77	0.11
8	Training Fees	1,447,730,091.11	0.14
9	Profit Share	105,909,011,520.91	10.22
10	Tariff on gas transport through SoNGAS pipeline	2,831,852,124.88	0.27
	Payments made to Tanzania Revenue Authority (Large Tax payers & Domestic Revenue Department)	523,297,183,607.72	50.51
11	Corporate tax	478,906,781,309.97	46.23
12	Skill Development Levy (SDL)	18,010,789,243.56	1.74
13	Excise Duty	26,379,613,054.19	2.55
	Payments made to Local Authorities	18,233,652,911.62	1.76
14	Biharamulo District Council	106,740,948.10	0.01
16	Butihama District Council	159,518,434.61	0.02
18	Chunya District Council	26,557,934.86	0.00
20	Geita District Council	2,213,981,009.00	0.21
22	Geita Town Council	6,610,395,633.67	0.64
24	Kahama District Council	2,802,632,443.28	0.27
26	Kishapu District Council	31,909,300.39	0.00
28	Mbinga District Council	165,292,010.10	0.02
30	Msalala District Council	1,229,396,943.25	0.12

SN	Description of the payment	Amount	%
32	<i>Musoma District Council</i>	22,316,148.25	0.00
34	<i>Songwe District Council</i>	851,710,759.83	0.08
36	<i>Tarime District Council</i>	4,013,201,346.28	0.39
	Payment to the Treasury Registrar	8,117,974,040.00	0.78
37	<i>Dividends for Government Shares held in the Company</i>	8,117,974,040.00	0.78
	Total	1,035,968,474,883.87	100.00

EMPLOYMENT DATA REPORTED BY 36 COMPANIES

SN	Company	Foreign Employees		Local Employees - Skilled		Local Employees - Unskilled		Salary Paid		
		Male	Female	Male	Female	Male	Female	Foreign Employees	Local Employees - Skilled	Local Employees - Unskilled
1	GEITA GOLD MINING LIMITED	51	1	1,669	206	111	22	29,998,702,822.52	119,126,685,859.00	5,580,543,041.00
2	NORTH MARA GOLD MINE LIMITED	51	-	736	58	-	-	25,234,566,321.77	40,237,374,687.67	-
3	PAN AFRICAN ENERGY TANZANIA LIMITED	1	-	91	19	2	2	1,455,335,845.14	15,802,646,250.00	7,770,655.00
4	BULYANHULU GOLD MINE LIMITED	71	-	1,041	105	-	-	15,501,620,594.20	25,707,816,150.04	-
5	M&P EXPLORATION PRODUCTION TANZANIA LIMITED	6	1	64	24	-	-	4,376,030,536.10	4,210,565,790.56	-
6	SANDVIK MINING AND CONSTRUCTION TANZANIA LIMITED	-	-	-	-	-	-	1,334,580,108.31	1,660,282,255.63	-
7	PANGEA MINERALS LTD	1	-	14	3	-	-	-	12,180,723,948.06	-
8	SHANTA MINING COMPANY LIMITED	6	-	732	49	79	5	1,531,788,977.91	21,409,927,108.12	749,640,538.27
9	AUMS (T) LIMITED	49	2	176	15	123	26	21,843,638,778.00	6,987,548,747.00	4,029,576,836.00
10	CAPITAL DRILLING (T) LTD.	16	-	193	4	-	-	1,009,638,506.40	4,757,158,800.00	-
11	ORICA TANZANIA LIMITED	-	-	7	2	44	2	-	1,196,924,362.80	2,570,204,061.60
12	OXLEY LIMITED	2	2	23	10	-	-	292,828,340.00	243,073,000.00	-
13	SEA SALT LIMITED	7	-	55	4	35	4	396,358,462.20	442,180,412.08	89,121,049.39
14	TANCOAL ENERGY LIMITED	-	-	-	-	-	-	-	-	4,761,645,772.00
15	RUVUMA COAL LIMITED	-	-	57	2	263	6	-	59,496,860.32	374,793,489.20
16	DODSAL HYDROCARBONS & POWER (TANZANIA) PVT LTD.	1	-	7	2	-	-	363,864,516.50	385,253,274.00	-
17	GLOBEIQ TANZANIA SERVICES LIMITED	2	-	52	4	-	-	1,487,786,970.77	7,045,632,413.06	-
18	JAC RIJK AFRICA LIMITED	3	-	149	5	15	1	207,600,000.00	1,054,367,831.00	16,900,000.00
19	WILLIAMSON DIAMONDS LTD.	-	-	-	-	-	-	904,869,041.94	4,696,969,995.55	85,462,757.55
20	STAMIGOLD COMPANY LTD	-	-	195	43	59	2	-	6,176,858,980.55	131,712,000.00
21	BUSOLWA MINING LIMITED	-	-	37	3	93	8	-	107,097,471.00	52,711,855.00
22	SHELL EXPLORATION AND PRODUCTION TANZANIA LIMITED	1	-	9	9	-	-	2,280,763,103.12	3,992,183,115.96	-
23	CATA MINING COMPANY LIMITED	43	1	46	9	283	30	5,439,007,486.48	612,000,000.00	2,305,513,984.25
24	EQUINOR TANZANIA AS	3	-	8	6	-	-	2,337,021,216.46	2,354,737,323.00	-
25	MANTRA TANZANIA LIMITED	4	-	11	3	-	-	1,473,561,695.53	1,951,611,024.34	-
26	AECI MINING TANZANIA LIMITED	3	-	47	2	-	-	906,402,303.01	2,171,937,748.62	-
27	MBOGO MINING AND GENERAL SUPPLY LIMITED	1	-	29	5	20	4	46,190,800.00	268,736,800.97	200,000,000.00

28	TANGA CEMENT PUBLIC LIMITED COMPANY	5	-	235	29	-	1	4,744,111,471.37	9,942,000,000.00	19,644,000.00
29	TANZANIA PORTLAND CEMENT COMPANY LIMITED	10	-	217	30	-	-	5,660,680,108.76	12,068,651,692.04	-
30	DANGOTE CEMENT LIMITED	47	0	349	61	-	-	-	7,111,332,812.82	-
31	PANAFRICAN MINING SERVICES (TANZANIA) LIMITED.	-	-	13	-	-	-	-	798,645,041.06	-
32	BEARING MAN GROUP TANZANIA LIMITED	1	-	4	-	-	-	213,741,123.87	157,743,853.00	-
33	MMG GOLD LIMITED	5	-	20	-	140	20	9,185,521.90	2,986,190.48	995,396.83
34	TOL GASES COMPANY LTD	2	-	114	-	-	-	785,012,646.00	2,458,945,066.44	-
35	MAWENI LIMESTONE CO.LTD	48	5	291	24	-	-	-	4,521,773,500.00	-
36	STATE MINING CORPORATION	-	-	85	28	25	3	-	2,366,000,000.00	11,000,000.00
	Total	393	12	6,776	764	1,292	136	129,834,887,298.26	324,267,868,365.16	20,987,235,436.08

LOCAL PROCUREMENT DATA REPORTED BY 34 COMPANIES

SN	Company	Goods	Service
1.	GEITA GOLD MINING LIMITED	223,749,335,245.90	1,075,039,487,315.67
2.	NORTH MARA GOLD MINE LIMITED	300,610,090,522.08	176,330,779,705.11
3.	PAN AFRICAN ENERGY TANZANIA LIMITED	198,504,743,928.07	-
4.	BULYANHULU GOLD MINE LIMITED	193,992,401,017.20	178,968,537,834.34
5.	M&P EXPLORATION PRODUCTION TANZANIA LIMITED	1,933,766,264.45	2,027,278,109.49
6.	SANDVIK MINING AND CONSTRUCTION TANZANIA LIMITED	4,202,818,048.75	-
7.	PANGEA MINERALS LTD	85,206,759,132.26	83,650,228,875.10
8.	SHANTA MINING COMPANY LIMITED	174,440,143,045.32	86,336,458,212.60
9.	AUMS (T) LIMITED	45,704,140,386.42	4,327,407,159.09
10.	ORICA TANZANIA LIMITED	12,250,650,070.72	-
11.	ZEM DEVELOPMENT (T) CO. LIMITED	763,073,406.20	123,067,665.90
12.	OXLEY LIMITED	494,462,518.60	704,071,909.88
13.	SEA SALT LIMITED	1,592,827,674.85	5,052,231,208.44
14.	TANCOAL ENERGY LIMITED	-	2,839,417,867.10
15.	RUVUMA COAL LIMITED	2,398,798,828.70	9,034,147,197.12
16.	DODSAL HYDROCARBONS & POWER (TANZANIA) PVT LTD.	-	7,229,689,024.62
17.	GLOBELEQ TANZANIA SERVICES LIMITED	-	112,461,606.23
18.	JAC RIJK AFRICA LIMITED	785,421,880.00	407,038,372.00

19.	WILLIAMSON DIAMONDS LTD.	2,496,382,430.53	11,829,629,209.57
20.	STAMIGOLD COMPANY LTD	36,233,098,528.39	1,158,903,096.95
21.	BUSOLWA MINING LIMITED	1,703,598,110.01	1,139,883,624.76
22.	SHELL EXPLORATION AND PRODUCTION TANZANIA LIMITED	83,610,198.03	7,653,255,334.88
23.	CATA MINING COMPANY LIMITED	9,689,173,000.92	589,488,009.01
24.	EQUINOR TANZANIA AS	209,794,318.76	9,978,754,100.68
25.	MANTRA TANZANIA LIMITED	494,194,237.53	4,762,752,487.90
26.	AECI MINING TANZANIA LIMITED	7,196,530,698.22	12,645,726,950.03
27.	MBOGO MINING AND GENERAL SUPPLY LIMITED	5,006,526,610.54	386,309,777.90
28.	TANGA CEMENT PUBLIC LIMITED COMPANY	58,257,494,918.72	15,139,483,524.60
29.	TANZANIA PORTLAND CEMENT COMPANY LIMITED	185,460,036,880.54	176,984,110,295.32
30.	DANGOTE CEMENT LIMITED	70,767,198,067.49	51,563,415,369.69
31.	PANAFRICAN MINING SERVICES (TANZANIA) LIMITED.	-	897,236,609.06
32.	BEARING MAN GROUP TANZANIA LIMITED	38,554,944.00	-
33.	MMG GOLD LIMITED	4,366,320,798.00	2,761,313,925.22
34.	STATE MINING CORPORATION	9,901,117,295.85	755,998,132.03
	Total	1,638,533,063,007.1	1,930,428,562,510.3

SOCIAL PAYMENT AS REPORTED BY 34 COMPANIES

SN	Company	Education projects/activities	Health services projects	Water and sanitation projects	Infrastructure development projects	Sports/arts and entertainment activities projects	Economic empowerment projects	Environmental conservation projects	Humanitarian aids contribution	Other contribution/payments
1	GEITA GOLD MINING LIMITED	1,432,402,692.00	2,285,198,771.00	685,119,588.00	1,318,400,000.00	-	1,982,000,000.00	20,168,500.00	200,000,000.00	712,145,859.00
2	NORTH MARA GOLD MINE LIMITED	52,961,215.40	162,429,550.50	102,161,720.00	3,188,436,223.18	-	-	-	-	-
3	PAN AFRICAN ENERGY TANZANIA LIMITED	844,324,629.63	-	-	-	-	-	-	-	-
4	BULYANHULU GOLD MINE LIMITED	2,121,326,629.00	1,575,914,565.00	306,500,000.00	53,816,875.00	-	756,328,760.00	-	76,866,500.00	100,086,338.00
5	M&P EXPLORATION PRODUCTION TANZANIA LIMITED	378,098,550.00	-	-	-	-	-	-	-	-
6	PANGEA MINERALS LTD	1,278,502,600.00	382,772,080.00	92,131,712.50	242,165,351.24	-	194,998,100.00	-	155,337,486.00	11,709,000.00
7	SHANTA MINING COMPANY LIMITED	124,772,580.00	20,401,976.00	177,270,893.00	325,303,651.00	29,472,930.00	16,744,344.00	7,906,218.00	636,406.98	220,412,621.00
8	AUMS (T) LIMITED	84,714,577.02	-	-	-	15,620,000.00	-	-	-	140,327,650.40
9	CAPITAL DRILLING (T) LTD.	2,132,620.80	-	-	-	-	-	-	-	-
10	TANCOAL ENERGY LIMITED	-	-	7,645,800.00	-	-	-	-	-	8,857,500.00

11	WILLIAMSON DIAMONDS LTD.	-	-	-	-	-	-	-	-	2,100,000.00
12	STAMIGOLD COMPANY LTD	2,313,500.00	-	-	-	-	-	-	1,700,000.00	-
13	BUSOLWA MINING LIMITED	291,900,000.00	5,300,000.00	-	165,500,000.00	-	-	-	-	50,000,000.00
14	SHELL EXPLORATION AND PRODUCTION TANZANIA LIMITED	31,153,385.06	-	-	-	-	1,797,699,999.00	28,388,865.68	-	-
15	CATA MINING COMPANY LIMITED	5,000,000.00	-	-	-	1,060,000.00	-	-	-	3,700,000.00
16	EQUINOR TANZANIA AS	42,851,343.73	115,001,700.00	-	-	-	-	-	-	-
17	MANTRA TANZANIA LIMITED	32,495,400.00	50,562,148.20	19,500,000.00	-	4,370,000.00	-	4,073,000.00	10,460,000.00	12,558,373.00
18	MBOGO MINING AND GENERAL SUPPLY LIMITED	-	-	-	-	-	-	-	3,000,000.00	3,410,000.00
19	TANZANIA PORTLAND CEMENT COMPANY LIMITED	44,000,000.00	-	-	-	-	-	-	-	10,000,000.00
20	DANGOTE CEMENT LIMITED	949,572,436.91	15,551,942.54	60,941,454.24	-	45,508,228.81	6,667,944.83	3,030,373.17	-	14,265,840.42
21	MMG GOLD LIMITED	-	-	-	-	-	-	-	-	18,000,000.00
22	TOL GASES COMPANY LTD	3,142,500.00	3,500,000.00	-	3,700,000.00	160,000.00	-	-	-	12,000,000.00
23	STATE MINING CORPORATION	-	-	-	-	-	-	-	-	5,000,000.00
	TOTAL	7,721,664,659.55	4,616,632,733.24	1,451,271,167.74	5,297,322,100.42	96,191,158.81	4,754,439,147.83	63,566,956.85	448,000,392.98	141,511,895,931.42

PRODUCTION DATA FOR MINERALS

Type of Mineral	Unit of Measure	Weight	Total Value (TZS)
Diamond	Carats	50,013.98	18,240,764,039.23
Gold (Large Miners)	Kilograms	32,753.91	4,510,863,663,705.69
Gold (Medium Miners)	Kilograms	5,856.13	407,498,856,066.55
Gold (Artisanal Small Miners)	Kilograms	16,993.70	2,103,968,531,460.24
Silver	Kilograms	7,357.78	13,789,699,135.72
Tanzanite (Cut & Polished)	Carats	140,594.70	28,419,399,036.35
Tanzanite (Raw)	Kilograms	8,934.12	29,529,605,520.90
Tanzanite (Rough)	Kilograms	90,364.51	2,019,749,372.06
Other Gemstones	Kilograms	17,076,547.71	31,028,151,699.26
Graphite	Tons	366.93	374,384,705.21
Other Metallic Minerals	Tons	47,727.81	18,960,136,719.83
Tin ore	Kilograms	120,373.77	4,043,099,303.66
Copper (concentrates)	Tons	11,635.94	223,910,221,241.60
Industrial minerals	Tons	10,642,751.49	222,028,204,716.02
Coal	Tons	744,923.46	228,815,480,019.67
Construction minerals	Tons	23,235,319.93	346,156,170,272.63
Total			8,189,646,117,014.64

PRODUCTION OF NATURAL GAS IN 2020/21

Company	Gas Field	Production (Mmscf)	Value
Maurel & Prom Company Limited	Mnazi Bay	28,834.4	219,546,590,697.76
Pan African Energy Tanzania Limited	Songosongo	33,021.9	64,388,661,438.36
TOTAL		61,856.3	283,935,252,136.12

FIRST FIVE (5) COMPANIES PAID CORPORATE INCOME TAX

